



The investment: Healthier forests and habitats
The return: Clean and abundant water



Peaks to People
Water Fund

Purpose



Peaks to People is a watershed investment fund in the Cache la Poudre and Big Thompson watersheds in which water beneficiaries fund fire mitigation projects in the upper watersheds to reduce impacts of wildfire on water.



COLORADO CONSERVATION EXCHANGE: **Timeline**

2008

Larimer Foothills Committee ecosystem services and ranching conversation

2009

Exchange idea born and housed at CCC

2010

Exchange Steering Committee created

CCC brings on Exchange Coordinator

Exchange major stakeholder meeting

High Park Fire

2011

Exchange helps form High Park Fire Coalition

2012

Exchange Coordinator position ends

2013

SC coordinates contracts with WRI, EI and CSE for analysis & program design guidance.

Exchange Coordinator brought on to coordinate reports

Exchange shares report results with stakeholders

2014

Exchange Decision & Design Meeting with stakeholders

Exchange interim steps with utilities & local NGOs

March 2014: First Working Group meeting

2015

June 2015: Grant to complete design and test

The Threat



- Our forests are not in a natural state
- Severe wildfires lead to erosion, increased sedimentation and debris in our waterways



History and Funding

Founded by The Center for Collaborative Conservation at Colorado State University and The Nature Conservancy

Funders – Proof of Concept Phase 2015-2018

- Anonymous foundation
- Individual donor
- Healthy Watershed Consortium
- Center for Collaborative Conservation
- The Nature Conservancy
- New Belgium Brewing Company
- Odell Brewing

Current Funders

- Anonymous foundation
- The Nature Conservancy

Working Group and Steering Committee

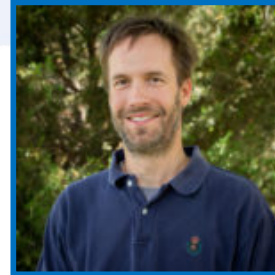
Water providers, conservation practitioners, landowners, breweries



Our Board of Directors



Robin Reid
Director, Center for Collaborative
Conservation



Rob Addington Forest/Fire
Program Director, The Nature
Conservancy



Judy Dorsey, President, Brendle
Group



Alex Castino, Program Officer,
Great Outdoors Colorado



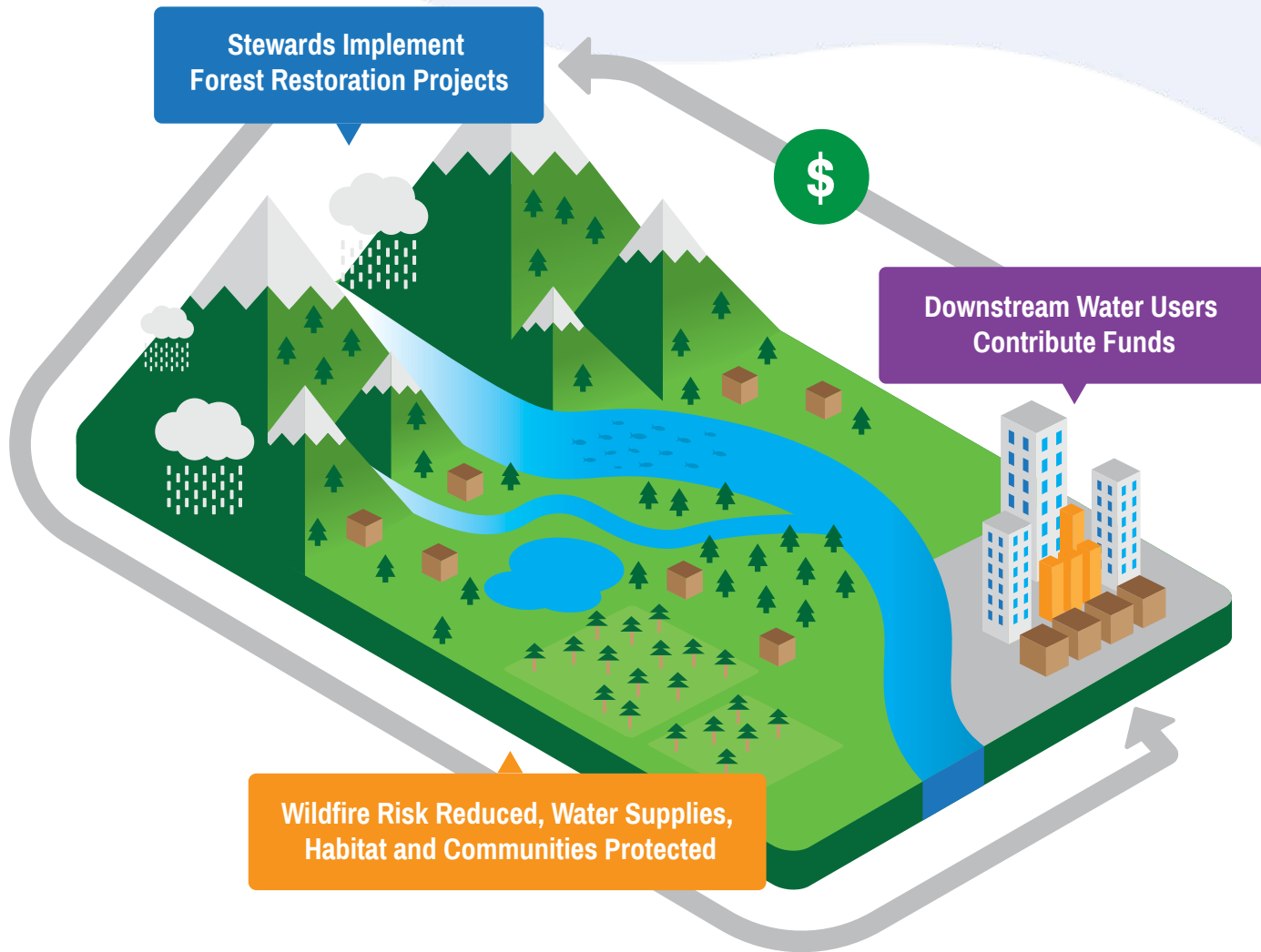
Brian Janonis, former Director of
Fort Collins Utilities



Mike Lester, Director, Colorado
State Forest Service



Our Solution



How to design a successful MBC program?

Keys to Success:

1. Define the problem
2. Understand your buyer
3. Quantify the outcome

How to design a successful MBC program?

2. Understand your buyer

Buyer Motivations

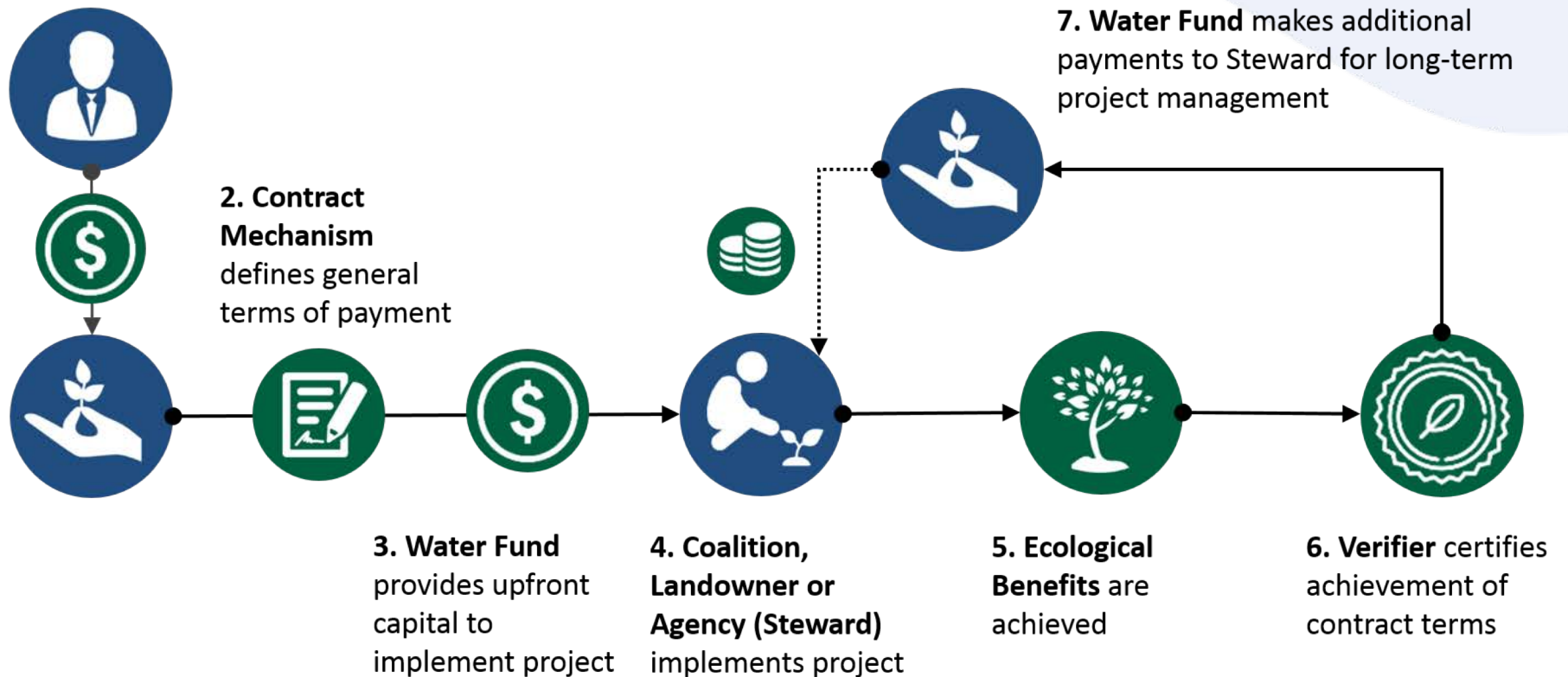
- Regulatory
- Economic
- Philanthropic

Buyer Considerations

- Priorities
- Existing risk mgmt. strategies
- Willingness to Pay

Program Design

1. Beneficiary contributes to Water Fund



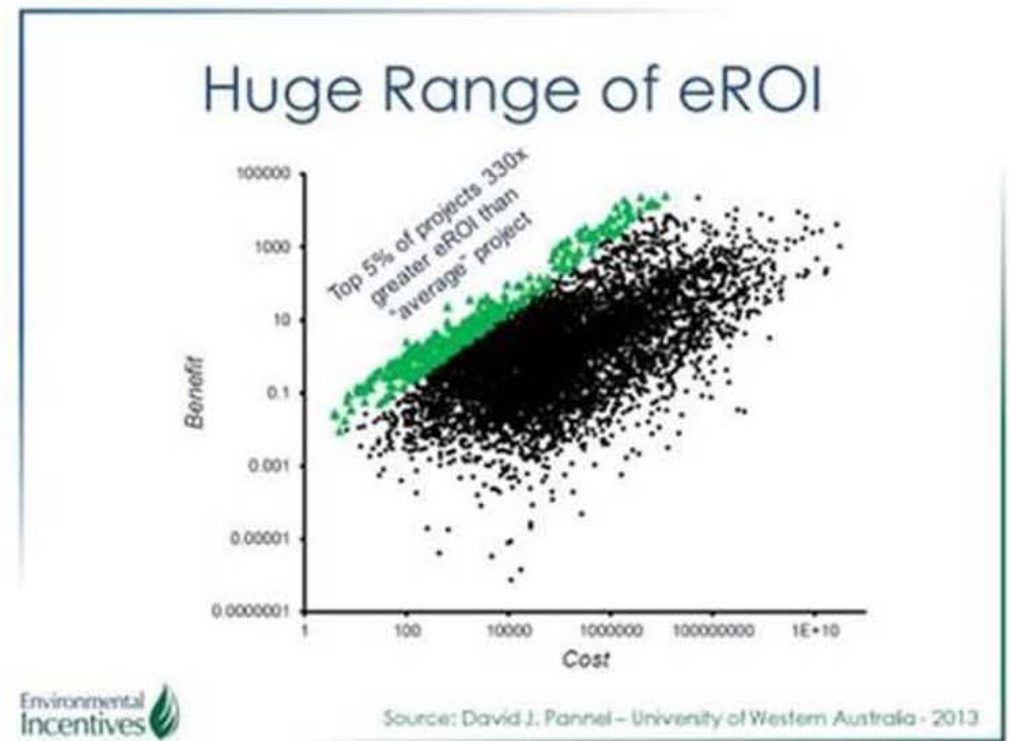
Partial pay for success model for funding projects through the Peaks to People Water Fund. Stewards may include individual landowners, public agencies, or watershed coalitions that work with multiple landowners to implement projects.



Key Players

Investors

- Want assurance that funding is used for best return on investment
- May have a direct stake in the outcome (i.e. are investing from a business perspective)
- May be interested in verification and performance measures for individual projects as well as aggregated



Watershed Investment Tool

- Optimize treatments for the biggest return in terms of avoided sediment
- Treatments are optimized based on avoided impacts to features identified by water providers
- Customize treatments plans based on budget and priorities

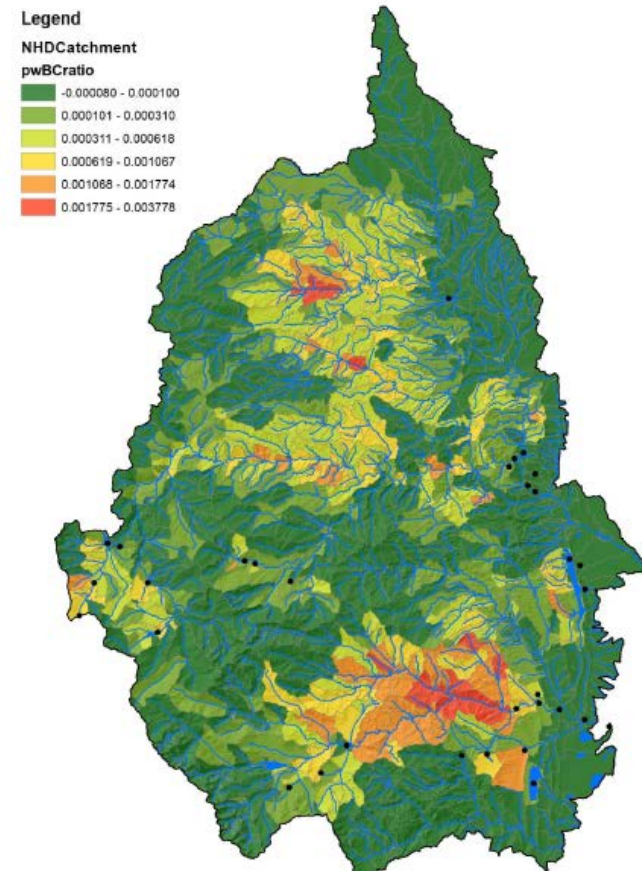


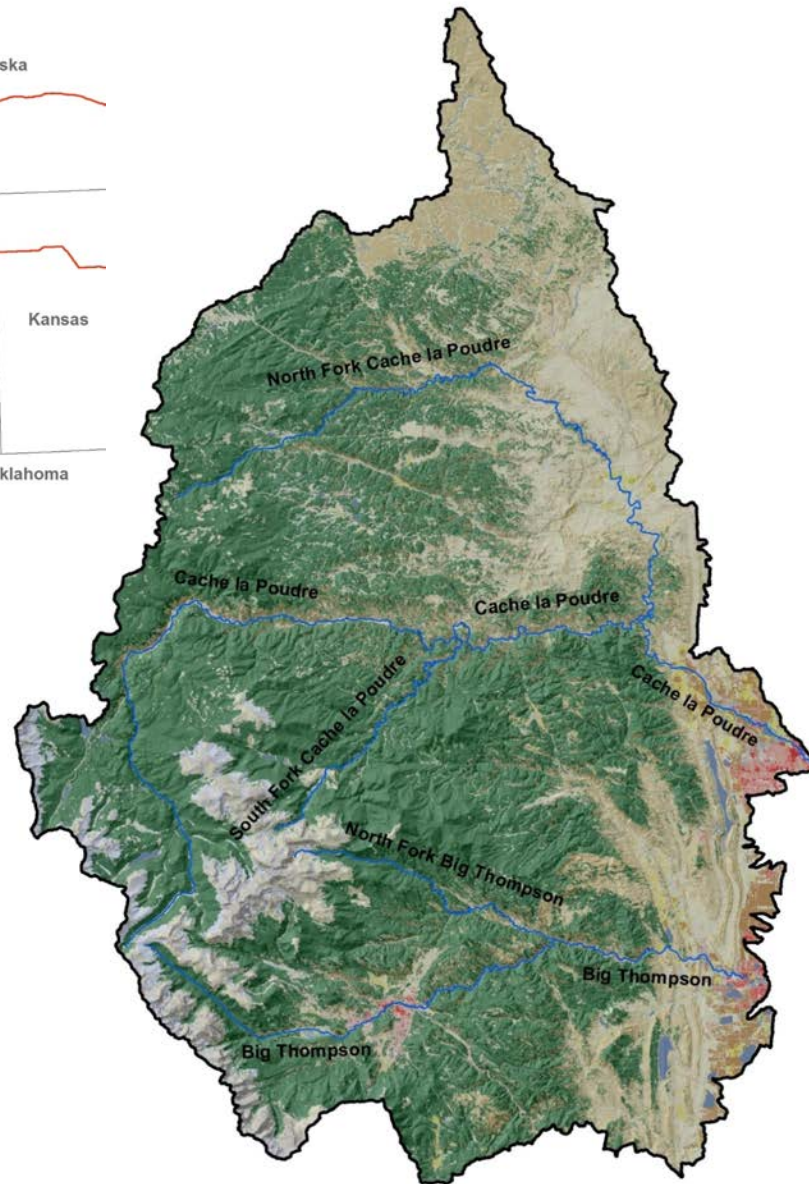
Figure 15: map of the probability-weighted benefit-cost ratio (pwBCratio) for mechanical only treatment used in the optimization process. This shows the relative value of treating any catchment, not just the optimal treatments picked for treatment in the optimization module. This map will change depending on feature cost assignments in the feature_costs.csv file.



Watershed Investment Tool



Area: 4,660 km²
Elevation: 1,499-4,344 m
Vegetation:
 Ponderosa pine 16.7%
 Lodgepole pine 16.6%
 Mixed conifer 11.3%
Ownership:
 Federal 52.3%
 Private 37.4%
 State 7.4%
 Local 2.9%



Water Stakeholders:

Fort Collins
 Greeley
 Loveland
 Northern Water
 (Fort Collins, Greeley, Loveland,
 Longmont, Boulder, Louisville,
 Lafayette, Broomfield, and
 smaller communities)
 Agricultural Users

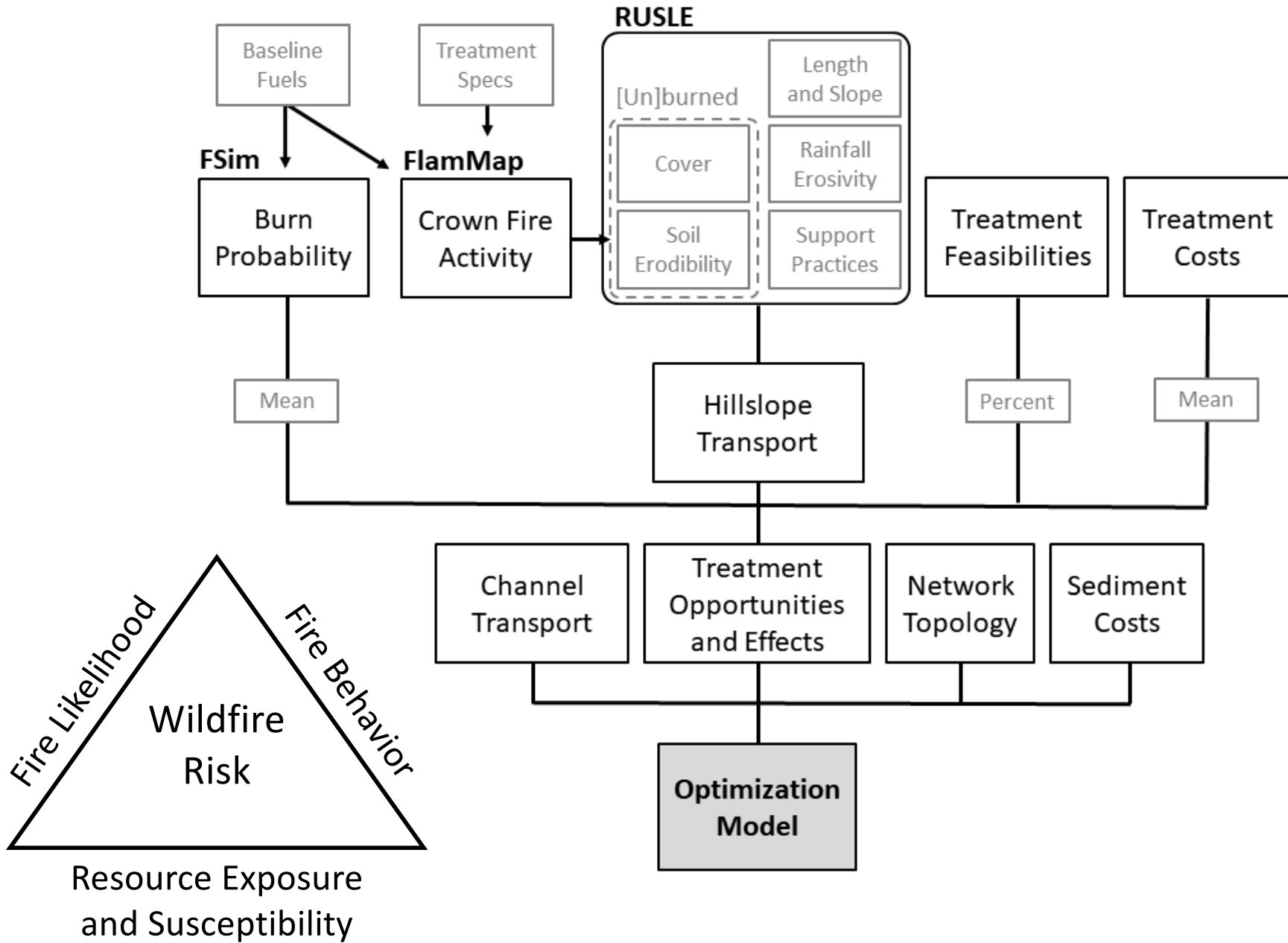
Water Resources and

Assets:

22 Reservoirs
 5 Municipal diversions
 4 Agricultural diversions
 Additional downstream
 infrastructure



Watershed Investment Tool



30 m Pixels

Catchments

Whole Watershed

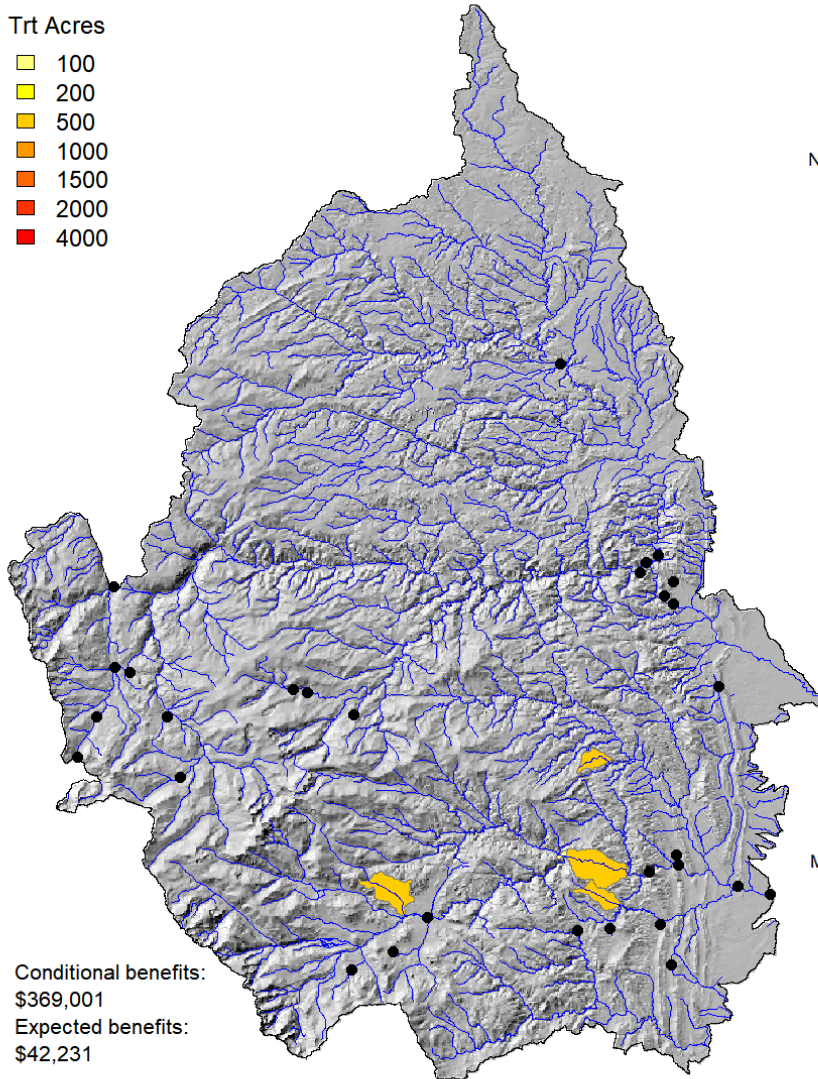


Watershed Investment Tool

Optimal Treatment Plan for \$1,000,000 Budget

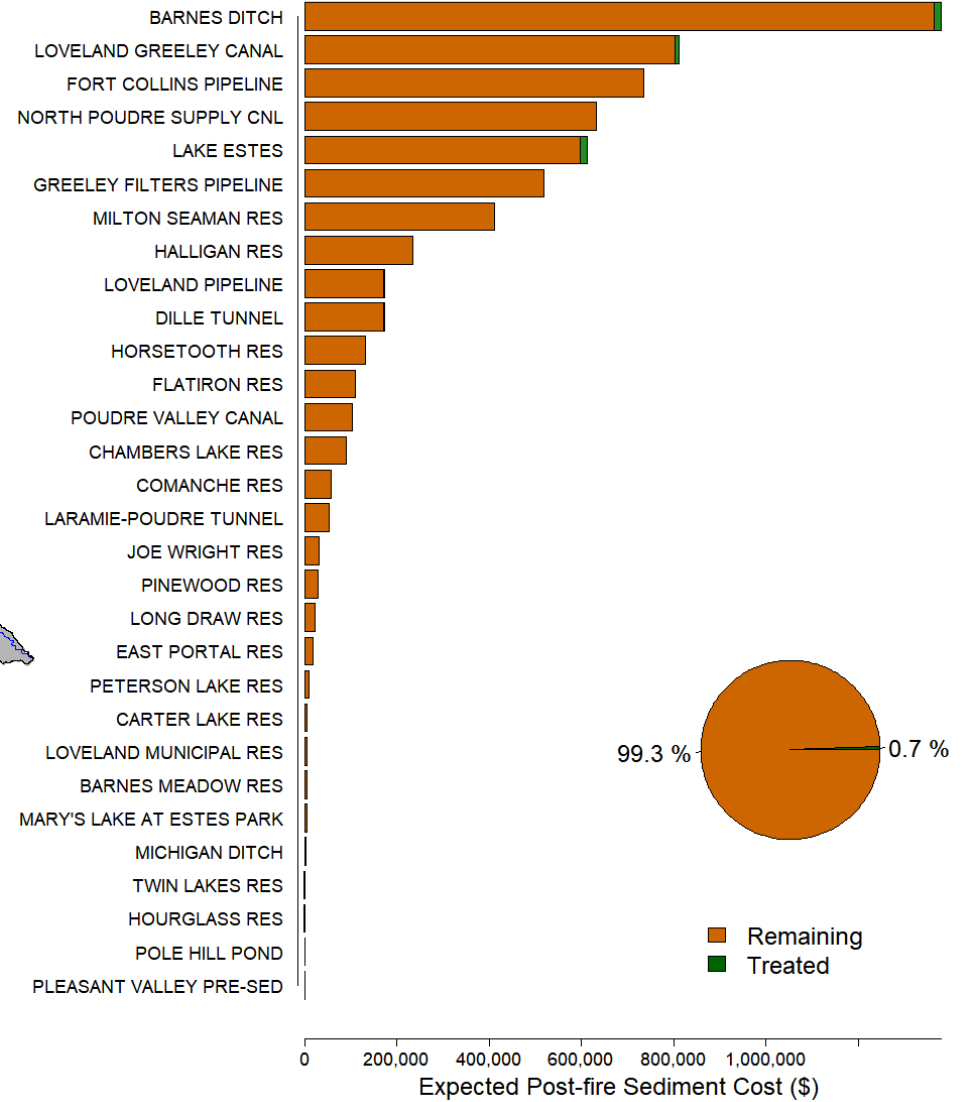
Trt Acres

- 100
- 200
- 500
- 1000
- 1500
- 2000
- 4000

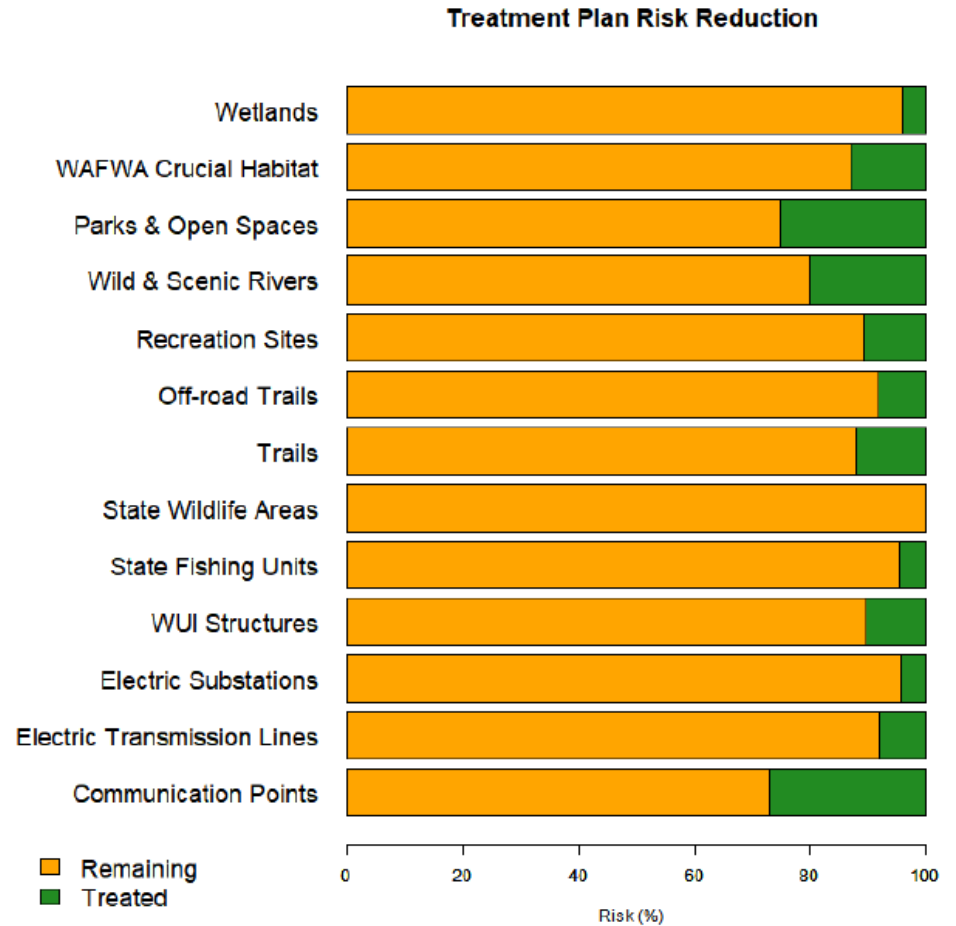
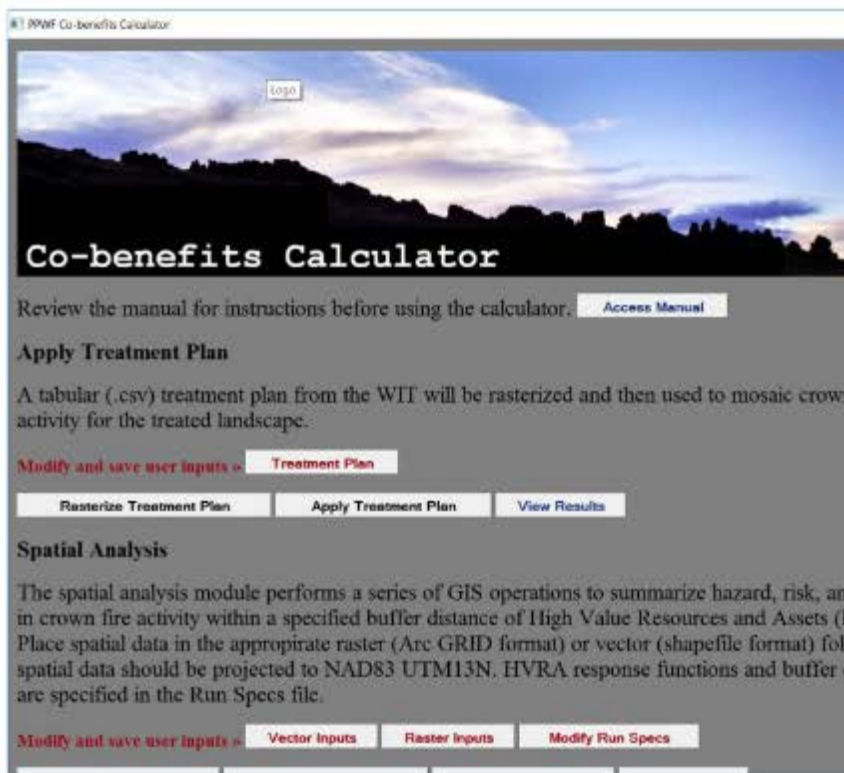


Conditional benefits:
\$369,001
Expected benefits:
\$42,231

Downstream Infrastructure Risk



Co-Benefits Module



Watershed Health Outcomes Tracker

- Sitka Technology Group's ProjectFirma
- Clearinghouse to propose and report on projects





Elkhorn Creek Forest Health Initiative Unit 2

Activity	Forest Management
Organizations	Coalition for the Poudre River Watershed, Colorado Forest Restoration Institute , Peaks to People Water Fund, The Nature Conservancy Colorado
Primary Contact	None
Project Stage	Completed
Duration	2017

Forest Management

The Ben Delatour Scout Ranch is a 3,200-acre property located 40 miles northwest of Fort Collins, CO. Project work began in late 2016 in an area of the ranch within the Elkhorn Creek subwatershed. Elkhorn Creek feeds directly into the Poudre River, making it extremely important to the overall watershed health. The area has been fire suppressed for more than 100 years, which has led to increases in forest density and heavy fuel accumulations. This initiative builds on an existing project initiated by the Coalition for the Poudre River Watershed and partners in 2015, and allowed an additional 104 acres to be treated.

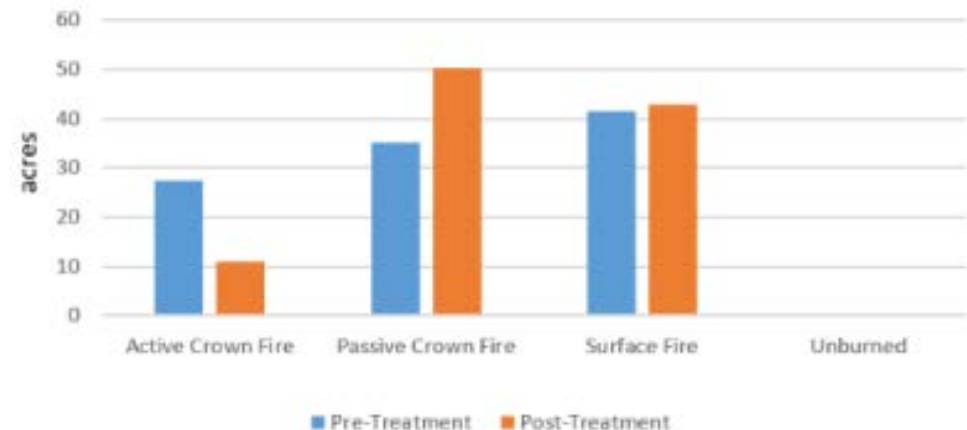


Key Accomplishments

- Fuels Reduction/Forest Restoration: 104 acres
- Active Wildfire Reduced: 16 acres
- Reduced Local Erosion: 240 metric tons
- Reduced Erosion to Streams: 131 metric tons
- Avoided Sediment in Water Supplies: 463 metric tons
- Reduced Risk of Sediment in Water Supplies: 68 metric tons
- Avoided Cost of Sediment in Water Supplies: \$2,800
- Avoided Home Loss (number): 0.4
- Avoided Home Loss (\$): \$114,280
- Crucial Wildlife Habitat Protected from Severe Wildfire: 104 acres
- Parks and Open Space Protected from Severe Wildfire: 0 acres

Project Themes

Elkhorn Creek Unit 2



Watershed Health Outcomes Tracker

Watershed Health Outcomes Reporter

About ▾ Projects ▾ Program Info ▾ Results ▾

Accomplishments Dashboard



SHOWING RESULTS FOR

All Funders ▾

CURRENTLY TRACKING

3 Projects • \$160,065 Total Investment • 8 Partners

What type of work do we do?

Where does funding come from?

Who do we work with?



Big Thompson Demonstration Site

Ramsay Shockey/SLB

- 73 acres treated
- Pile burning and lop and scatter



Cache la Poudre Demonstration Site



Ben Delatour Scout Ranch

- 100+ acres treated
- Prescribed burn Fall 2017
- Hazard was substantially reduced following the application of prescribed broadcast fire as compared to thinning alone



Accomplishments

Accomplishments to Date (Peaks to People funded projects)

- \$210,000 invested in fuels reduction activities
- 174 acres treated (146 additional funded, July 2019)
- 69 acres active crown fire reduced
- \$124,000 in avoided home loss
- 994 metric tons of avoided sediment impacts to water supplies
- 104 acres crucial wildlife habitat protected from severe wildfire
- \$17,000 reduced sediments costs to water supplies

Anticipated Accomplishments (through 2020)

- \$2,000,000 invested in fuels reduction activities
- 1,000 acres treated
- 990 acres active crown fire reduced
- \$460,000 in avoided home loss
- 93,000 metric tons of avoided sediment impacts to water supplies
- 657 acres crucial wildlife habitat protected from severe wildfire
- 46 acres avoided impacts to parks and open spaces
- \$705,000 reduced sediments costs to water supplies



Next Steps

- Engage current funders and water dependent businesses
- Set goals and track progress in the two watersheds
- Educate the public on the need for this work
- Explore co-benefits and geographic expansion in the WIT





Protecting Watersheds
Sustaining Habitats
Enriching Communities



Peaks to People
Water Fund

heather@peakstopeople.org
970 829.0020
peakstopeople.org

Like us on Facebook:

www.facebook.com/peakstopeople

Outcomes Reporter:

outcomes.peakstopeople.org